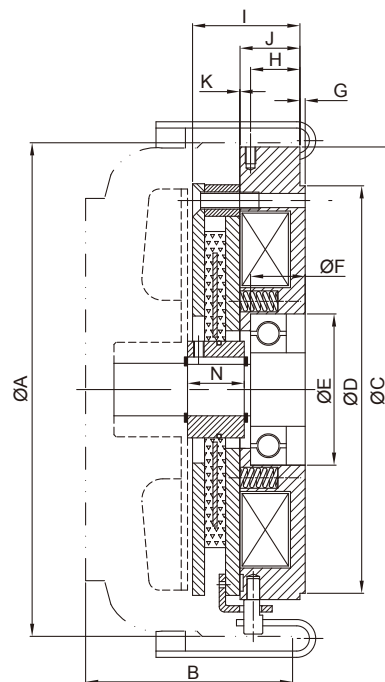
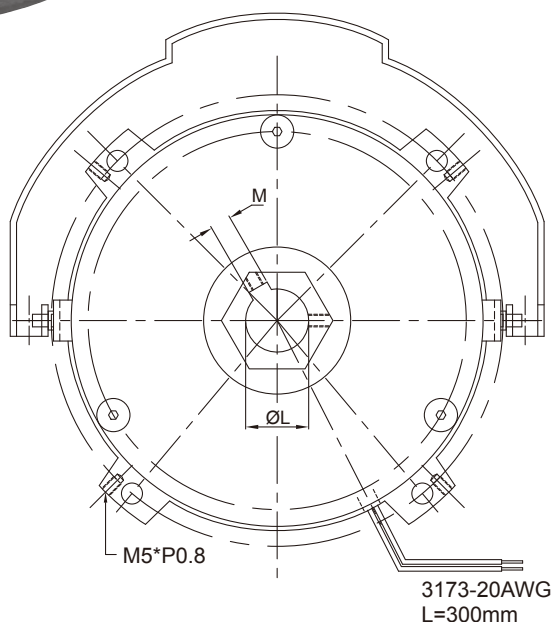
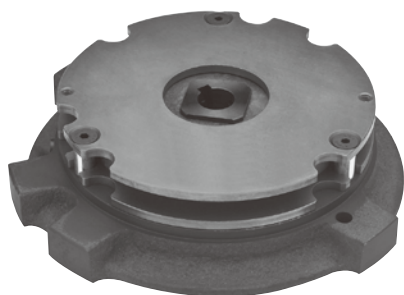


# CMB Series

## 斷電式馬達煞車器 Failsafe Motor Brake



型號 MODEL	CMB0S4AA	CMB0S8AA	CMB1S6AA	CMB3S2AA	CMB006AA	CMB008AA	
靜摩擦轉矩 [kgm](Nm) Static Friction Torque	0.4 (4.0)	0.8 (8.0)	1.6 (16)	3.2 (32)	6.0 (60)	8.0 (80)	
慣性矩 J (kg-cm <sup>2</sup> ) Moment of Inertia	0.483	1.95	4.12	4.12	13.36	13.36	
電壓 Voltage VDC	90 / 190						
功率 Power (W) at 20°C	20	20	25	35	50	65	
外型尺寸 Exterior Dimensions (mm)	A	144	162	177	200	219	235
	B	57	65	77	89	93.5	102
	C	142	159	174.5	194	215	231
	D	116	128	141	158	180	194
	E	32	35	47	52	62	72
	F	12.5	18	20.5	20.5	26	27
	G	4	3	3.5	3.5	3.5	3.5
	H	11.5	11	14.5	14.5	20	23.5
	I	31.7	35.2	38.1	38.1	47.6	51.1
	J	15.5	16.5	19.5	19.5	25	28.5
	K	0.15~0.25	0.15~0.25	0.15~0.25	0.2~0.3	0.2~0.3	0.2~0.3
	L	10   11	12   13   14	15   20	20   25	25   30	25   30
	M	4	5	6	7   8	7   8   10	7   8   10
	N	19.5	16	19	21	30	30